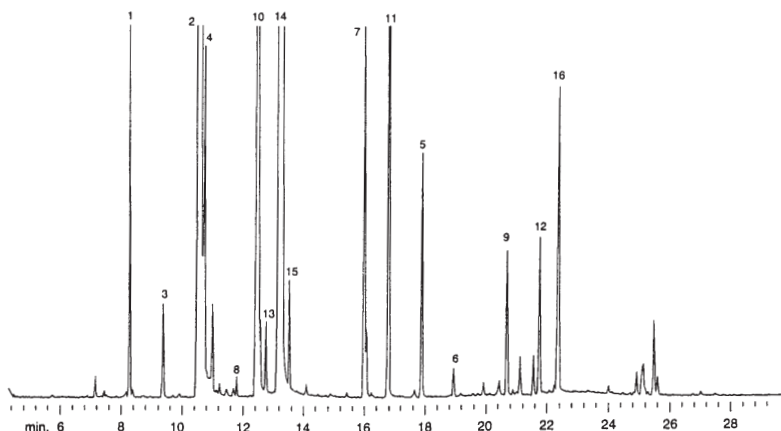


**Atlas of Chromatograms****Citronella Java Oil  
Polar and Non-Polar Capillary GC Separations****GC260****Citronella Java oil, non-polar column****Conditions:**

Sample Citronella Java oil, Maha Pengiri grass extract  
 Sample introduction split injector, 100:1 ratio  
 Column 60 m × 0.25-mm i.d. fused silica  
 Column phase Restek Rtx-1 bonded methyl silicone, 0.25- $\mu$ m film  
 Detector flame ionization,  $2 \times 10^{-11}$  AFS  
 Carrier gas helium, 30 cm/s  
 Oven temperature 100°C programmed to 260°C at 4°C/min

**Peaks:**

1. Limonene
2. Citronellal
3. Linalool
4. Borneol
5.  $\gamma$ -Elemene
6.  $\beta$ -Caryophyllene
7. Neryl acetate
8.  $\alpha$ -Terpineol
9. Germacrene-D
10.  $\beta$ -Citronellol
11. Geranyl acetate
12.  $\delta$ -Cadenene
13. Nerol
14. Geraniol
15. Eugenol
16.  $\alpha$ -Bergamotene

**GC261****Citronella Java oil, polar column****Conditions:**

Sample Citronella Java oil, Maha Pengiri grass extract  
 Sample introduction split injector, 100:1 ratio  
 Column 60 m × 0.25-mm i.d. fused silica  
 Column phase Restek Stabilwax bonded polyethylene glycol, 0.25- $\mu$ m film  
 Detector flame ionization,  $2 \times 10^{-11}$  AFS  
 Carrier gas helium, 30 cm/s  
 Oven temperature 100°C programmed to 260°C at 4°C/min

**Peaks:**

1. Limonene
2. Citronellal
3. Linalool
4. Borneol
5.  $\gamma$ -Elemene
6.  $\beta$ -Caryophyllene
7. Neryl acetate
8.  $\alpha$ -Terpineol
9. Germacrene-D
10.  $\beta$ -Citronellol
11. Geranyl acetate
12.  $\delta$ -Cadenene
13. Nerol
14. Geraniol
15. Eugenol
16.  $\beta$ -Bergamotene

